

RLX200/RMX200 Extension cable reel (set) up to 2 x 200m

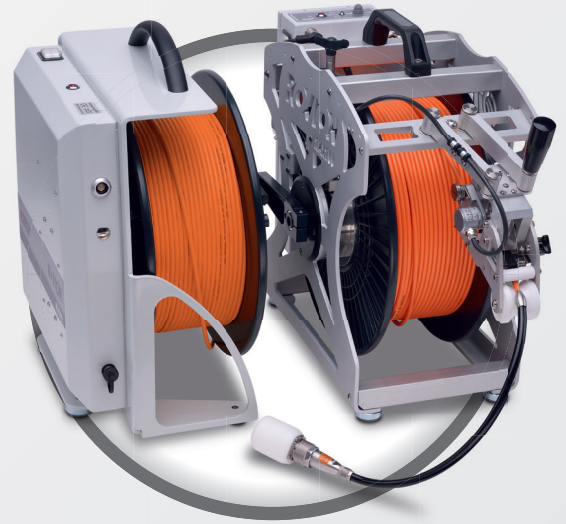
Pipes, which cannot be reached easily can be inspected from the inspection vehicle by using this set of reels. The set consists of a modified RLX200 cable reel and a modified RMX200 cable reel with up to 200m camera cable each. The manual cable reel RLX200 serves as an extension reel for the manual cable reel RMX200. The control panel is connected to the RLX200 and the crawler to the RMX200. Using a switch the RMX200 can be used either in extension reel mode or in stand-alone mode. Both manual reels are made for portable applications and ensure high stability.

RMX200

- 200 m armored camera cable
- Meter counter
- Adjustable brake
- Hand crank
- Winding support
- Telescopic bar with control panel mount
- Switch extension reel mode/stand-alone mode
- Connector for RLX200 (or for control panel in stand-alone mode)

RLX200

- 200 m armored camera cable
- Adjustable brake
- Hand crank
- Winding support
- Connector for control panel
- Stand-alone mode not possible (no meter counter/crawler connector available)



Technical data - RMX200

Drive	Manual
Cable length	max. 200 m
Meter counter	1
Integrated deflection pulley	Yes
Voltage	230 V AC/115 V AC
Frequency	50 Hz/60 Hz
Electrical current	2 A/4 A
Ambient temperature range	0°C to 40°C
Storage temperature range	-20°C to 70°C
Dimensions (WxHxD)	315 x 495 x 680 mm
Weight (incl. cable)	approx. 29 kg

Technical data - RLX200

Drive	Manual
Cable length	max. 200 m
Meter counter	No
Integrated deflection pulley	Yes
Voltage	230 V AC/115 V AC
Frequency	50 Hz/60 Hz
Electrical current	2 A/4 A
Ambient temperature range	0°C to 40°C
Storage temperature range	-20°C to 70°C
Dimensions (WxHxD)	245 x 460 x 424 mm
Weight (incl. cable)	approx. 23 kg



IPEK International GmbH · See, Gewerbepark 22 · 87477 Sulzberg · GERMANY
☎ +49 8376 921 800 🏢 +49 8376 921 8021 ✉ isg_info@idexcorp.com 🌐 www.ipek.at

Issue: February 2018 - subject to changes - ROVION, AGILIOS, XPECTION are registered trademarks of IPEK

