

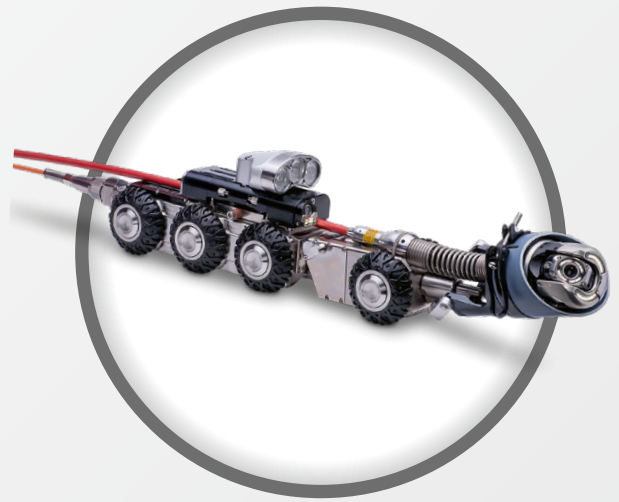
RX140SAT

SAT crawler Ø 150 mm - 600 mm

The RX140SAT is a satellite crawler with feed unit for a push rod designed for the inspection of laterals from the main pipe.

Technical data - RX140SAT

Drive	6-wheel-drive (both sides can be controlled independently from each other)
Equipment	steerable, roll and pitch sensor, pressure monitoring, backeye camera
Nominal pipe widths	DN150 to DN600
Location	-
Pressure tightness	Up to maximum 1 bar
Optional accessories	SV LED auxiliary light, PTP70 II and PTP50 camera
Power supply	Trough cable reel RAX300 or CCU II
Protection class	IP68 up to 10 m water depth
Ambient temperature range	0°C to 40°C
Storage temperature range	-20°C to 70°C
Material	Stainless steel
Dimensions (WxHxD)	130 x 120 x 610 mm (without guide pipe)
Guide pipes available	127, 150, 200, 300, 400, 500 mm
Weight	approx. 20 kg



- Powerful six-wheel drive (steerable)
- Powerful feed unit for the push rod
- Snap-in system for easy mounting of the push rod
- Integrated backeye camera
- Optional auxiliary light
- Compatible to the SAT cable reel RXSAT150 and the cable reels RAX500 and RAX300